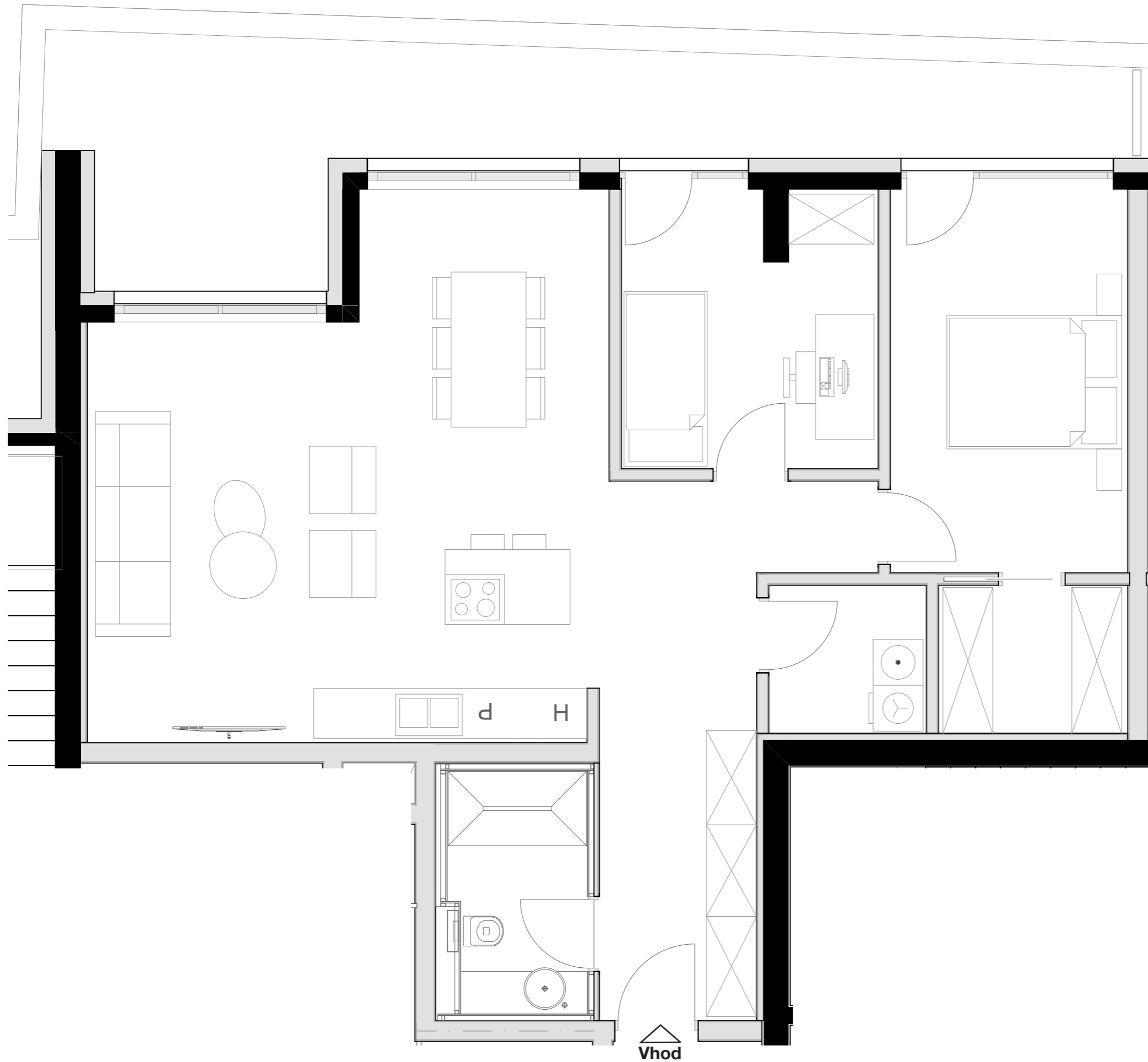


# LEVLJI GRAD

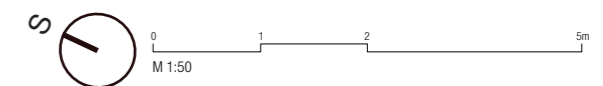
## STANOVANJE L2-S 505

KVADRATURA STANOVANJA: 115,27m<sup>2</sup>



notranje površine 93,03m<sup>2</sup>  
zunanje površine 22,24m<sup>2</sup>

Kopalnica	6,00m <sup>2</sup>
Hodnik	14,26m <sup>2</sup>
Dnevno bivalni del / kuhinja	37,31m <sup>2</sup>
Terasa	22,24m <sup>2</sup>
Spalnica	13,91m <sup>2</sup>
Otroška soba	10,62m <sup>2</sup>
Shramba	3,73m <sup>2</sup>
Utility	2,58m <sup>2</sup>
Walk-in	4,62m <sup>2</sup>



OPOMBA:  
Možna so manjša odstopanja, do 3%. Vsa oprema v tlorisih je vrisana v informativne namene uporabnosti prostora.